

# Clavister CorePlus™ 9.00

## Release Highlights

A blue banner with a pattern of small white dots. On the left, the text 'CorePlus™' is written in a large, white, sans-serif font. Below it, the number '9.00' is written in a smaller, semi-transparent white font. On the right side of the banner, there is a close-up, blue-tinted image of a human eye, looking towards the left.

# CorePlus™

- **Web-Based Administration User Interface**
- **Command-Line Interface**
- **Built-In SSH Server**
- **Built-In SCP Server**
- **Enhanced AAA Functionality**
- **Usability Enhancements**
- **New XML-based Configuration File Format**

### Introducing Clavister CorePlus™ 9.00

Clavister CorePlus™ 9.00 is our latest version of the award-winning network security operating system powering the Clavister Security Gateway Series part of the Clavister Security Services Platform (SSP™), our security service-oriented framework.

Clavister CorePlus™ features high throughput performance with high reliability, paired with fine granular control and seamless integration with all subsystems, in-depth administrative control of all functionality, as well as a minimal attack surface which helps negate the risk of being a target for security attacks.

The new release comes with a number of new and exciting features, including the new Web-based administration user interface (UI). This document will focus on all things new in this release. For a comprehensive tour of Clavister Security Gateway, please visit [www.clavister.com/products/documentation/](http://www.clavister.com/products/documentation/) for product and solution brochures, customer spotlights and feature briefs.

### New Features

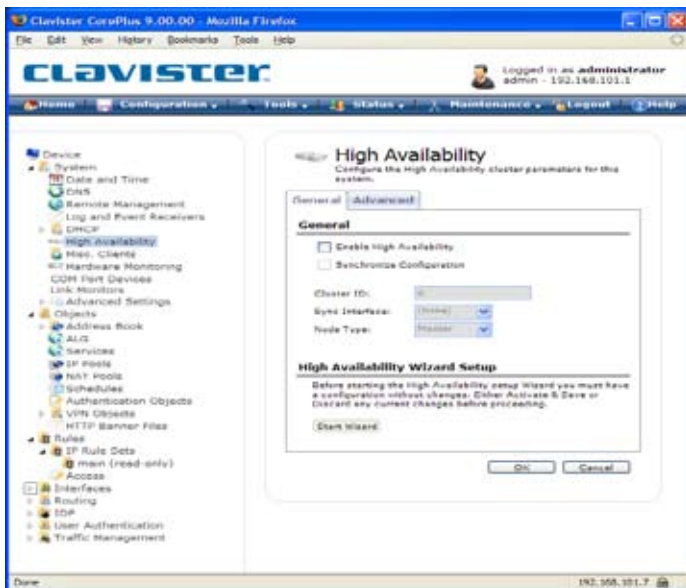
The new Clavister CorePlus™ 9.00 release is focused on enhancements of the administration experience and ease-of-use for administrators. It also supports a number of new features, which will be presented here in more detail.

## Web-Based Administration User Interface

The new Web-based administration user interface is an easy to use administration system which greatly simplifies product deployment. No need to use a local console for initial setup and no need to install any management software; just use your browser and you are good to go.

The new administration user interface sports a modern and easy-to-use look and feel. Everything you need to configure and manage your Clavister Security Gateway product is included. It has the ability to do granular configuration, but presents a simpler and more intuitive user interface for first-time users. The new interface also rationalizes some aspects of the user interface and automates some complex task to further speed up the common administrative tasks. This way you have access to every configurable object, either directly or through a number of convenient wizards.

It is designed to make the work of the administrator much easier. Everything you need is neatly packaged and grouped according to the normal day-to-day workflow.



## Command-line interface (CLI)

Using the new command-line interface, you have access to all objects in a Clavister Security Gateway configuration. This makes it a very powerful tool for anyone who wants to build custom administration interfaces, or interact with external tools and systems.

## Built-in SSH server

Clavister CorePlus™ 9.00 has a built-in SSH (Secure Shell) Server, which provides secure and remote access to the command-line interface (CLI). The SSH (Secure Shell) protocol can be used to access the CLI over the network from a remote host. SSH is a protocol primarily used for secure communication over insecure networks, providing strong authentication and data integrity. SSH is widely used with client support for a wide range of computer systems. Clavister CorePlus™ 9.00 supports SSH protocol version 1.0, 1.5 and 2.0 and SSH access is regulated by the remote management policy as defined in Clavister CorePlus™.

## Built-in SCP server

Clavister CorePlus™ 9.00 has a built-in SCP (Secure Copy) Server, which makes it easy to upload firmware in a more secure way. Secure Copy (SCP) is widely used communication protocol for secure file transfer with client support for a wide range of computer systems. SCP is a compliment to command-line interface usage and provides a secure means of file transfer between the administrator's system and a Clavister Security Gateway. Files can be both uploaded and downloaded with SCP.

## Enhanced AAA functionality

New in this version is the ability to control what an administrator may or may not do, and log all administration events so you can trace what an administrator has done in the system.

## Usability Enhancements

Clavister CorePlus™ 9.00 also sports a number of usability enhancements to further aid administrators in their day-to-day tasks. A number of new wizards have been added to make administration even easier.

## New XML-based configuration file format

The new XML-based configuration file format is much more robust and easy to upgrade. The new format forms the basis for future configuration file formats for all Clavister products. As a positive side-effect, it is also human-readable, which helps in troubleshooting.

**NOTICE:** Clavister CorePlus™ 9.00 Web-based administration does not support centrally managed administration. If you need centrally managed administration you must use Clavister CorePlus™ 8.90.02 or later with Clavister FineTune™.

**CLAVISTER**  
WE ARE NETWORK SECURITY

Clavister AB, Torggatan 10, SE-891 33 Örnsköldsvik, Sweden  
Phone: +46 (0)660 29 92 00 | Fax: +46 (0)660 122 50 | Web: [www.clavister.com](http://www.clavister.com) | Email: [info@clavister.com](mailto:info@clavister.com)