

Clavister SAG 6.20

Release Highlights

Clavister SAG

6.20

- **New Backup/Restore Subsystem**
- **Improved Routing Support**
- **Enhanced Cluster Support**
- **Improved Local User Database**

Introducing Clavister SAG 6.20

The new Clavister SAG 6.20 release targets stability, manageability and improved configuration support, which includes a newly designed backup/restore subsystem, with support for backing up and restoring clustered solutions. All administration task related to backup and restore are easily accessed from within the Clavister Secure Access Gateway administration user interface.

Also included in the new Clavister SAG 6.20 release is the possibility to configure static routes for each network interface, including routing support for clustered solutions. Routing and interface configuration is included in backups and thus can be easily restored.

Clavister SAG 6.20 comes with much enhanced cluster support, including configuring interface settings, routing settings and DNS setting for each cluster node. All settings are synchronized between cluster members. This enables you to "hot-swap" any cluster member without re-configuration.

The local user database solution has been completely re-written for speed and reliability. Existing databases will be converted when upgrading.

Furthermore, the Clavister SAG 6.20 release has focused on clearing up a number of reported issues in previous releases.

New Features

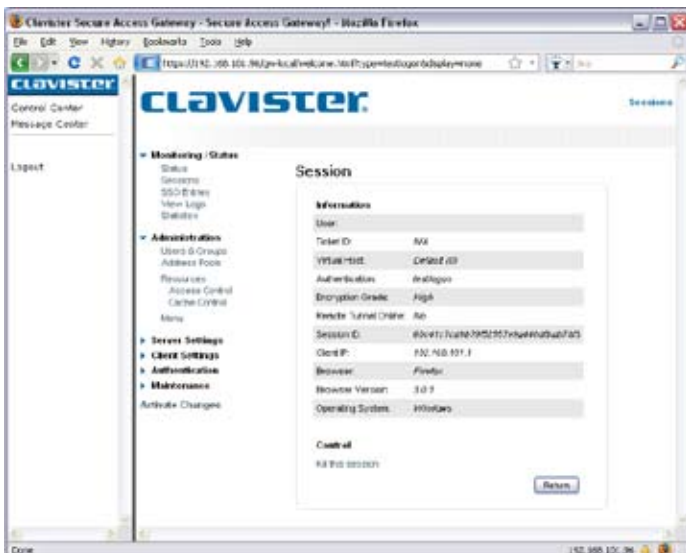
The new Clavister SAG 6.20 release focused on stability, manageability and improved configuration support.

New Backup/Restore Subsystem

The new backup/restore subsystem has been designed ground up and features easy administration and secure backup and restore to a single file. It is also possible to backup and restore a cluster or single members of a cluster. The backup functionality will back up the Clavister SAG installation directory, including all user data, SSO database, customized HTML pages and network configuration.

Routing Support

The new routing support enables you to configure static routes for each network interface. Routing configuration is also supported for clusters were you configure each cluster member separately. Your entire routing configuration is included in your backup so you can easily restore a whole cluster if needed.



Enhanced Cluster Support

This release comes with a great number of enhancements for clustering. You can now configure interface settings, DNS settings and routing information on a per node basis. These settings are then synchronized between cluster members, which allow you to "hot-swap" a cluster member without any downtime or need for re-configuring.

Improved Local User Database

The local user database solution has gone through a complete re-write. The focus has been on speed and reliability. Upgrading from a previous release will convert your existing local user database. This is done without affecting the existing data. Please read the accompanying product documentation for more information.



Clavister AB, Torggatan 10, SE-891 33 Örnsköldsvik, Sweden
Phone: +46 (0)660 29 92 00 | Fax: +46 (0)660 122 50 | Web: www.clavister.com | Email: info@clavister.com