

Clavister Management

Administration is the key to make network security work easy and effortless

FEATURES AT-A-GLANCE

- Clavister InControl offers comprehensive centralized management, including triple-AAA functionality and delegation
- Unified Administration of Clavister Security Gateways, including Clavister Virtual Series
- Highly Scalable and Versatile Client/Server Architecture with support for 100+ clients
- Support for Task-Driven Workflow Management
- Comprehensive Clavister InControl Logging Agent and Log Forensics
- Clavister Reporting for easy generation and sharing comprehensive reports in PDF and HTML format
- Version Control for Modifying Configurations
- Built-In License Center
- Configuration Consistency Control
- Backup and Restore
- Easy-to-use Web-based management for all Clavister products
- Advanced Command-Line Interface (CLI) for batch-oriented configuration

For any network, security management is one of the more important aspects. It has to be intuitive, efficient and easy to use for large enterprises, with multiple firewalls at multiple sites, and even in geographical disperse areas, keeping your security management consistent and cohesive, and up to date is a non-trivial task. All these security management systems are included with our Clavister cOS Core products – free of charge.

Clavister products can be managed in a number of ways depending on your preferences, size of your network and number of administrators. All Clavister products includes a set of management tools ranging from command-line interface (CLI) support, Clavister Web Management browser-based management to Clavister InControl, our full-blown centralized management solution.

This enables administrators to use the most optimal tool to control the security network environment.

Clavister InControl

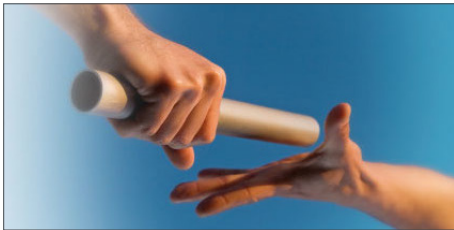
Centralized Management for large installations

Clavister InControl offers a comprehensive centralized management solution that will assist and help administrators perform their daily tasks faster, easier and in a more streamlined way. Its intuitive user interface and support for task-driven workflow management guides administrators through complex and repetitive tasks, thereby alleviating the burden of managing large installations. With support for triple-AAA (Authentication, Authorization and Audit) the integrity and configurations managed by the Clavister InControl system is kept under strict control. This level of control makes it easy to use delegated management, allowing specific teams and personnel to access only designated parts of the system.



Built-In AAA Support

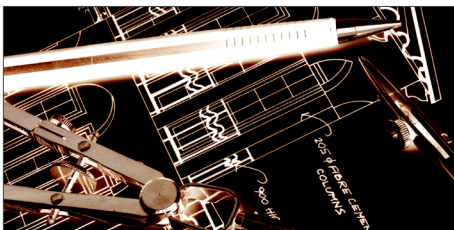
With support for triple-AAA (Authentication, Authorization and Audit) the integrity and configurations managed by the Clavister InControl system is kept under strict control. Administrators are required to authenticate to gain access to authorized parts of the system. A comprehensive audit log is also available for security audits.



Delegated Management

Clavister InControl support delegated management which enables administrators to assign limited administrator rights to specific administrators.

This makes it easy to administrate large installations where dedicated administrators have limited access in performing, for example help desk functionality, or managing certain accounts.



Advanced Routing

The Real-Time Monitoring functionality enables administrators to actively monitor the status of a large number of Clavister Security Gateways. This functionality is highly configurable, and supports many different graphical elements, giving administrators the ability to view the overall status from one centralized location.

Clavister InControl can be extended to collaborate with a vast number of other management system with the use of Clavister InControl Software Development Kit (SDK).

For any large enterprise, Managed Service Provider or Data Center, the challenge of managing security in large installations requires an easy-to-use, centralized and scalable solution. Administrators must keep security policies cohesive and up-to-date across multiple domains and geographical dispersed environments, often containing large numbers of security devices.

Clavister InControl offers a comprehensive centralized management solution that will assist and help administrators perform their daily tasks faster, easier and more streamlined. Special considerations are provided for Data Centers and Managed Service Providers, supporting their customer's unique security policy needs. Many of these customers require that the integrity of their data is kept confidential, requiring security mechanisms for accessing and changing security policies. It is also vital that Data Centers and Managed Service Providers are able to deploy and provision security devices to support a constantly changing customer base.

Clavister InControl Architecture

The Clavister InControl centralized management solution is built on a modern, robust and scalable client/server architecture. It is a unified solution for all Clavister Security Gateway products, regardless if they are hardware appliances or virtual appliances. It works the same way across all Clavister Security Gateway products.

The Clavister InControl solution consists of the Clavister InControl Server and one or more Clavister InControl Clients. The Clavister InControl Server is capable of servicing a large number of concurrent administrators and several thousand Clavister Security Gateways. The Clavister InControl solution also includes the comprehensive Clavister InControl Logging Agent (ILA), which can reside alongside the Clavister InControl Server or on standalone hosts depending on traffic load or preference.

Clavister InControl Server

The Clavister InControl Server is extremely robust and is capable of servicing a large number of administrators and configured devices. Built for scalability and flexibility, the Clavister InControl Server is responsible for all communication between the Clavister InControl Clients and the Clavister ILA, as well as with all Clavister Security Gateways in the network.

Clavister InControl Client

The Clavister InControl Client is the graphical user interface which administrators use for everyday work and it offers a multitude of functionality and performance enhancements for administrators. Using the schema-based design, the Clavister InControl Server will generate the user interface controls displayed by the Clavister InControl Client. This enables the Clavister InControl Client to service new versions and models of Clavister Security Gateway without having to upgrade Clavister InControl.

Clavister InControl Logging Agent

Included with Clavister InControl is a comprehensive logging solution comprised of Clavister InControl Logging Agent (ILA). The log forensics in Clavister InControl Client offers advanced search, sort and filtering functionality, which makes it easy for any administrator to find exactly what they are looking for. It is also possible to run the log forensics in real-time mode; a feature which comes in handy when troubleshooting network traffic.

Another important reporting aspect is user reporting. Today reporting is based on IP address and what has transpired on that IP, or how much traffic that has passed through a certain interface or VLAN. Other factors contribute to this result, such as roaming clients on multiple sites, users changing computers, etc. Since a user can work in multiple locations and using multiple devices, or even multiple users using the same computer, the collected data does not paint a full picture. Clavister User Identity Awareness enable reporting on user-level, which means a much higher level of correctness, which is essential to make correct and informative decisions.

Typical network scenario featuring Clavister InControl

Device Configuration

Clavister InControl uses a task-driven approach, which enables administrators to quickly and easily configure new Clavister Security Gateways, Domains, Monitor Dashboards and other elements for their network environment. This reduces the overall configuration time for deployment and ensures a consistent work practice.

Administrators can also enjoy a number of productivity enhancements, such as personal favorites which enable administrators to drag commonly used Clavister Security Gateways to the Favorites view for easy access. There is also a global Search function and advanced filtering capabilities.

Domain-Based Policy Management

It is easy to enforce policy rules in Clavister InControl. Global policy rules are managed through a Global Domain object, which simplifies the creation of mandatory corporate policies across all devices in the network. These settings will be propagated to all Clavister Security Gateways in the network. Using this hierarchical approach, it is easy to create sub-domains, where each sub-domain can contain other sub-domains. This provides scalability and flexibility from a centralized management location while leveraging commonalities across the whole environment.

Delegated Management

It is important to make sure that only the right people have access to the right systems and can only do what they should. With Delegated Management it is possible to create Groups where you set read/write permissions based on whether the Group should be able to configure Clavister Security Gateways, view monitoring status, perform audits and create new Groups. It is possible to import groups from Microsoft Active Directory and assign permissions to those groups.

It is also possible to limit access to specific Clavister Security Gateways so that one administrator can only manage one or more specific Clavister Security Gateways. This makes it very easy to delegate the workload between several administrators while keeping full control on who is doing what.

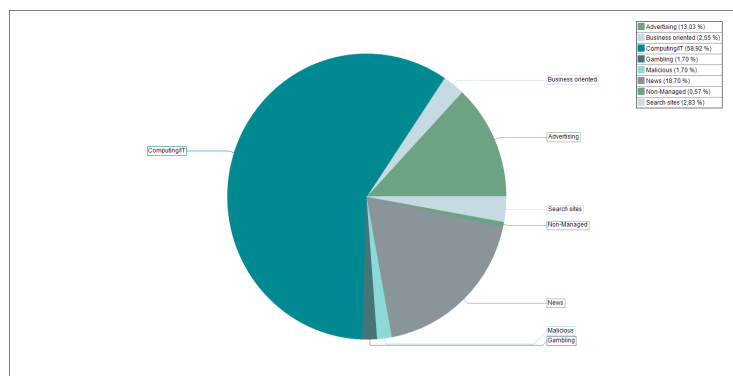
Clavister Reporting

The ability to share system data, such as Traffic Summary or Weekly Application Usage as reports with other organizational units is as important as collecting the data. Clavister InControl makes it easy to output reports in both HTML and PDF format for easy distribution to interested parties. The Report subsystem builds on the powerful Log Analyzer, the Log Query Language (LQL) and the cube support.

Available as a standard, our new reporting feature allow you to generate informative reports using our predefined reports, or a fully customized report to suit your specific needs. Reports can include graphical data charts, such as pie charts and bar charts, and can easily be generated as PDF reports for printing or shared via email, or as HTML reports for on-screen use.

Top URL Category (This Week)

Time interval: This Week
Shows Top URL Categories for this week.

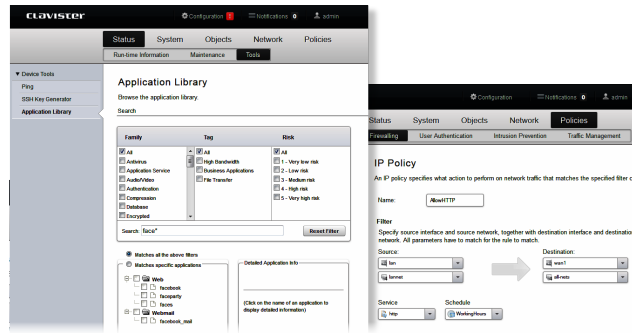


Content Category	Allowed Requests
Advertising	46
Business oriented	9
Computing/IT	208
Gambling	6
Malicious	6
News	66
Non-Managed	2
Search sites	10

Clavister Web Management

Optimal ease-of-use for smaller installations

The Clavister Web Management interface provide you with a sleek, modern interface that excels in giving you a streamline workflow for managing your Clavister product. The Clavister Web Management interface is the optimal choice when operating a single device.



Command-Line Interface

Powerful programability

The built-in command-line interface (CLI) provide a convenient way to configure Clavister products. It enables you to batch process a large number of commands when, for example, configuring new devices. The CLI contains a rich set of commands to cover all aspects of device management.

Requirements

Clavister InControl (minimum)	Server	Client	Logging Agent
Operating System		Microsoft Windows 7 and later	
Hard Disk Space *		100 MB (available hard disk space for installation)	
RAM		1 GB	
Clavister InControl (recommended)	Server	Client	Logging Agent
Operating System	Microsoft Windows 7 or Windows 2008 Server, R2 Microsoft .NET Framework 3.5		Microsoft Windows 7 Microsoft .NET Framework 3.5
Hard Disk Space *	1 GB	1 GB	1 MB
RAM		4 GB	
Processor	Intel i7 Processor (or processor with equivalent specifications)		
Screen Resolution	1280 x 1024 pixels (or higher resolution)		

Specifications subject to change without further notice.

CID: 9150-0040-24 (2015/10)

* Additional data requires more hard disk space and may vary depending on your configuration.

Clavister Web Management interface requires a Firefox 11+, Opera 11.6+, Safari 5+, Internet Explorer 9+ or Chrome 18+ Web browser.

Where to Buy Clavister

For more information about where to buy Clavister products, visit www.clavister.com/partners. Additional resources and customer testimonials can be found at www.clavister.com/resources.

About Clavister

Clavister (NASDAQ: CLAV) is a leading security provider for fixed, mobile and virtual network environments. Its award-winning solutions give enterprises, cloud service providers and telecoms operators the highest levels of protection against threats, with unmatched reliability. Clavister's performance in the security sector was recognized with the Product Quality Leadership Award from Frost & Sullivan. The company was founded in Sweden in 1997, with its solutions available globally through its network of channel partners. To learn more, visit www.clavister.com.

Where to Buy

www.clavister.com/partners

Contact

www.clavister.com/contact



CLAVISTER
CONNECT . PROTECT

Clavister AB, Sjöгатan 6 J, SE-891 60 Örnsköldsvik, Sweden

■ Phone: +46 (0)660 29 92 00 ■ Fax: +46 (0)660 122 50 ■ Web: www.clavister.com